

# RIHP NTH QLD RUBIES 2012 SINGAPORE TOUR HANDBOOK AND TEAM DIARY



# 2012 RIHP NTH QLD RUBIES SINGAPORE TOUR

---

## *Remote and Indigenous Hockey 2012 Singapore Tour Management Team*

Name	Position	Contact No.
JULIE MCNEIL	RIHP STATE PROGRAM MANAGER	0418880147
WESLEY FERNS	RIHP NTH QLD RUBIES COACH	0467486071
ENA WAINAGA	RIHP NTH QLD RUBIES MANAGER	0459582390
DALASSA SAVAGE	RIHP NTH QLD RUBIES ASSISTANT COACH/MANAGER	0417895528
MATT COOK	11 a side manager RIHP NTH QLD RUBIES ASSISTANT COACH/MANAGER NO.2 AND ASSISTANT TO DVD PRODUCTION	0406707414
ADRIAN ESTRIDGE	HQ DVD LEADING THE WAY PRODUCER	0427459665

### **IMPORTANT CONTACTS**

ORGANIZATION	CONTACT DETAILS
JETSTAR SINGAPORE	Telephone Number 800 6161 977 (+61 3 9347 0091)  Monday to Sunday 24 hours
PENINSULAR EXCELSIOR HOTEL	Peninsula.Excelsior Hotel Singapore 5 Coleman Street, Singapore 179805   Tel: (65) 6337 2200   Fax: (65) 6339 3847
SINGAPORE CRICKET CLUB	<b>Address</b> Connaught Drive Singapore 179681 <b>Telephone</b> +65 6338 9271 <b>Fax</b> +65 6337 0119 <b>Email</b> <a href="mailto:scc@scc.org">scc@scc.org</a>
AUSTRALIAN HIGH COMMISSION – SINGAPORE	High Commission address: 25 Napier Rd, Singapore - Telephone: 6836 4100 - Fax: 6737 5481
<a href="#">Sengkang Hockey Stadium</a> <a href="#">Wednesday Night Game</a>	57 Anchorvale Road Singapore 544964
Stadium to play the Singapore Cricket Club on Thursday	CCA @ Bukit Timah, 21 Evans Road 259366

### **LINKS**

**Website**

<http://www.remotehockey.com/skills-coaching/hockey-queensland-indigenous-pathways-support-program>

**Facebook**

<http://www.facebook.com/#!/pages/Remote-Hockey/240981416918>

<http://www.facebook.com/#!/pages/NQ-Rubies-documentary/229985613743010>

**You Tube**

<http://www.youtube.com/user/RIHPHockey>

**Twitter**

<https://twitter.com/#!/RIHPHockey>



# 2012 RIHP NTH QLD RUBIES SINGAPORE TOUR

---

## **TOURING TIPS**

1. MAKE SURE YOU KEEP YOUR PASSPORT SAFE AT ALL TIME
2. MAKE SURE YOU ALWAYS CARRY A PEN
3. MAKE SURE YOU HAVE THE NAME AND DETAILS OF THE HOTEL ACCOMMODATION IN SINGAPORE AND CARRY THIS WITH YOU AT ALL TIMES
4. MAKE SURE YOU ALWAYS ADVISE THE TEAM MANAGERS IF YOU ARE LEAVING THE HOTEL UNLESS IT IS A GROUP ACTIVITY
5. DO NOT CARRY LARGE AMOUNT OF CASH
6. DRINK PLENTY OF WATER – CONTINUE TO HYDRATE AT ALL TIMES
7. APPLY SUNSCREEN WHEN YOU ARE OUTDOORS
8. ALWAYS WEAR RIHP CAP WHEN YOU ARE OUTDOORS.

## **MORE TRAVEL TIPS**

Singapore is a very clean, safe and efficient city due to the strictly enforced laws.

Smoking in public buses, taxis, lifts, theatres, cinemas, government offices and air-conditioned restaurants and shopping centres is against the law. First offenders may be fined up to a maximum of S\$1,000. While it is an offence to smoke in air-conditioned eating places, smoking is not prohibited in air-conditioned pubs, discos, karaoke bars and nightspots.

Singapore's clean and green image is the result of more than two decades of public education campaigns and strict laws against littering. Littering of any kind is subject to up to a S\$1,000 fine for first offenders, and, for repeat offenders, up to S\$2,000 coupled with a stint of corrective work order cleaning a public place. As an extension of the law against littering, the import, sale and possession of chewing gum is prohibited. Spitting is also punishable by law in Singapore. So beware the next time you wish to clear your throat.

Failure to flush the toilet after use can result in a \$150 (S\$75) fine but then, chances of getting caught are pretty slim. However, urinating in elevators can cause the doors of some to permanently close until the police squad arrives! It's also wise to take your own toilet paper as it's not always available in many public toilets.

Singapore carries a mandatory death penalty for drug-trafficking and harsh penalties for possession and use within the country.

It is common courtesy to ask permission to take pictures of people, mosques or temples. When entering a Singaporean's house, temple or mosque, remember to take off your shoes. Do not eat or offer anything with your left hand when with Muslims and don't use your left hand when shaking hands with a Muslim.

Business cards are exchanged at the beginning of a meeting. Remember to give and receive the card with both hands. It is polite to look the card over and hold it while speaking. It is proper to address someone using the title of Mr., Mrs. or Miss. Do not use first names unless you are invited to.

## 2012 RIHP NTH QLD RUBIES SINGAPORE TOUR

### **SINGAPORE CUSTOMS**

Duty-Free Items: Personal effects and food preparations not exceeding \$50 in value. Visitors over 18 and not coming from Malaysia are allowed to bring in duty-free 1 litre of spirits, 1 litre of wine and 1 litre of beer, also 200 cigarettes or 50 cigars or 250 grams of tobacco.

[Check out more Travel Tips »](#)

There is no export duty. Export permits are required for firearms, ammunition, explosives, animals, gold in form, platinum, precious stones and jewellery (except reasonable personal effects), poisons and drugs. Any goods in excess of reasonable personal effects should be declared at exit points and an Outward Declaration form prepared, if need be. For inquiries, call the Airport Customs Department.

### **CURRENCY**

The currency unit is the Singapore dollar (S\$). Approximately SD\$1.30=AUS\$1

Notes are in denominations of: \$1, \$5, \$10, \$20, \$50, \$100, \$500, \$1,000 and \$10,000.

Brunei notes are interchangeable with Singapore notes and are quite common.

Coins are in denominations of: 1, 5, 10, 20, 50 and 100 cents.

### **DRINKING WATER**

It is perfectly safe to drink water straight from the tap in Singapore. However, for those who prefer bottled mineral water, local supermarkets and grocers always have ample stocks.



Singapore Flag

### **Facts and Figures**

<b>Full country name:</b>	
	699.1 sq km
<b>Population:</b>	4,987,600 (36% foreigners)
<b>People:</b>	74% Chinese, 13% Malay, 9% Indian, 3% Others
<b>Language:</b>	English, Malay, Mandarin and Tamil
<b>Religion:</b>	9% Taoist, 42% Buddhist, 15% Muslim, 15% Christian, 4% Hindu, 15% Others
<b>Government:</b>	Parliamentary democracy
<b>President:</b>	Tony Tan
<b>Prime Minister:</b>	Lee Hsien Long
<b>Major industries:</b>	Shipping, banking, tourism, electrical & electronics, chemicals, oil refining
<b>Major trading partners:</b>	US, Malaysia, Hong Kong, Japan
<b>Health risks:</b>	None
<b>Time:</b>	GMT/UTC+8
<b>Electricity:</b>	220-240V, 50 Hz
<b>County code:</b>	+65
<b>Mobile Phone network:</b>	GSM 900, GSM 1800, 3G
<b>Weights &amp; measures:</b>	Metric with local variations

## 2012 RIHP NTH QLD RUBIES SINGAPORE TOUR

### RIHP NTH QLD RUBIES SINGAPORE TOUR SCHEDULE

Sunday 26 <sup>th</sup> Feb 2012	12 midday	Adrian Julie Wes	Meet to discuss schedule for the assembly and Singapore Confirm roles and interview and script developments
	12.05pm	Lucretia Shyneal Jasmine	Flight DJ1901 TO TOWNSVILLE AND FLIGHT DJ1641 to CAIRNS ARRIVE CAIRNS 2.45PM COLLECT BAGGAGE AND ENA AND DALASSA WILL COLLECT YOU FROM THE AIRPORT
	Midday – 2pm	Ena and Dalassa	Book into Koala Court Organize food for Sunday Night and Monday
	Midday – 2pm	Donna Nepia JOCELYN AWHINA SAMANTHA	Travelling to WITH DONNA NEPIA AND FAMILY. ADDITIONAL ROOM FOR 2 ADAULTS AND 2 CHILDREN BOOKED AT KOALA COURT FOR DONNA AND FAMILY  NOTE HERE – RIHP WILL PAY THE ACCOMMODATION COSTS IN LIEU OF NO TRAVEL COSTS FOR THE 3 GIRLS.
	ACCOMMODATION DETAILS		Andy & Ruth Patrick Resident Managers Koala Court Holiday Apartments 147-155 McLeod Street CAIRNS QLD 4870 Phone 07 4031 7887 Fax 07 4041 1140 <a href="mailto:info@koalacourt.com.au">info@koalacourt.com.au</a> <a href="http://www.koalacourt.com.au">www.koalacourt.com.au</a>
	2.45pm	Ena and Dalassa	Collect Shyneal Lucretia Jasmine From cairns airport Flight Details DJ 1641 from Townsville due 2.35pm
	3pm	All team Members	Assemble at Cairns Hockey
	3.15 pm 0 5.00pm		Light Training

## 2012 RIHP NTH QLD RUBIES SINGAPORE TOUR

			<b>- Preparation for Monday</b>
	5.00pm	Wes Julie Adrian	Discuss planning for Monday and Tuesday – confirm arrangements and communicate them to Ena/Dalassa
	5.00pm –onwards	Ena and Dalassa	Take group back to Koala Court for dinner and rest
Monday 27 <sup>th</sup> Feb 2012	7.00am	Ena/Dalassa Rubies	Light walk and stretch
	9.30am	RIHP Team Rubies	Meet at Cairns Hockey
	9.30am – 12 noon	RIHP Team Rubies Adrian	Training Session
<b>Media is invited during this day preferable between 9.30am – 12 midday</b> <b>-interviews</b> <b>- show the uniform and the hockey equipment</b> <b>- training</b>	10.00am- 11.00am	<b>All parties</b>	<b>Interview with Sport and Recreation Services for Documentary/DVD</b> <b>Interview with Kim Guerin CEO Hockey Qld for the Documentary/DVD</b>
	12 noon – 3pm	Ena/Dalassa Rubies	Break
	12 noon – 3pm	RIHP TEAM	Organizing for Presentation
	3pm – 5.00pm  4.00pm		Training Game against Sapphires on Grass
	5.00pm – 6.00pm		Shower and Dress for Uniform
	5.30pm	Collect Food from IGA	Matt and Adrian
	6.00pm	Rubies arrive	Rubies will be responsible for welcome guests and name tags etc
	6.00pm	Kim Guerin Murray Bain RIHP Team  (see running sheet attached hereto)	Confirm the running sheet for the uniform presentations - Roles confirmed
	6.30pm- 7.30pm See running sheet	All team Rubies	Uniform Presentation to Nth Qld Rubies


## 2012 RIHP NTH QLD RUBIES SINGAPORE TOUR

		Invited Guest	<ul style="list-style-type: none"> <li>- HQ CEO</li> <li>- Local Reps</li> <li>- Parents/Family</li> <li>- Photos'</li> </ul> <p>This will be done in connection with CAIRNS HOCKEY TEAMS UNIFORMS PRESENTATIONS</p>
	8.00pm		Rest
Tuesday 28 <sup>th</sup> Feb 2012	7.00am		Walk and stretch
	10.30am		Assemble at International Airport – Cairns Check in as a group
	10.30pm		Arrive Singapore <ul style="list-style-type: none"> <li>- Transfers from airport</li> <li>- Check in at Hotel</li> <li>- Passports from RIHP Rubies</li> <li>- Room allocations – see list</li> <li>- Confirm Breakfast time</li> </ul>
Wednesday 29 <sup>th</sup> Feb 2012		RIHP team	Breakfast
	9.30AM	Matt Cook – Manager 11 a side	MEET IN FOYER TO TRAVEL TO TRAINING
	9.45AM	Matt Cook – Manager 11 a side	TRAVEL TO TRAINING
	10.30AM – 12 NOON	All parties	TRAINING
	1.00PM		LUNCH
	2.00pm – 4.00pm	All parties	Rest Coaches and Managers in preparation
	2.00PM	Julie and Adrian	Organize a place to do filming for the HEALTHY EATING/GO TO SCHOOL/POSITIVE BEHAVIOUR AROUND YOUNG PEOPLE on Thursday
	4.15pm – 5.00pm	Team Talk	Preparation for the night game
	5.45pm	All parties Matt Cook to confirm  Payment of the bus driver – Julie McNeil	Bus arrives to take team to the fields SengKang Hockey Stadium-Game on 29th Feb vs Singapore U21. This is the stadium where the Junior World Cup was held. 57 Anchorvale Road  <a href="http://www.streetdirectory.com/asia_travel/travel/travel_id">http://www.streetdirectory.com/asia_travel/travel/travel_id</a>

## 2012 RIHP NTH QLD RUBIES SINGAPORE TOUR

			<a href="#">52679/travel site 144244/</a>
	7.00pm	All parties	SINGAPORE UNDER 21 TEAM - POWER AIDE - ICE - FIRST AID After the game – fruit and lollies Presentation Certificates 15 in total
	8.45pm	All Team and support staff	Depart from grounds back to the Hotel on return strait to the Pool session – so ensure changed at the fields.
	9.15pm – 9.30pm	All Players	Pool Session at the Hotel Confirmed
	9.45pm- 10.00am		Colemans Café Waiting confirmation and details
Thursday 1 <sup>st</sup> March 2012	8.30AM	RIHP team	Breakfast
	10.30AM	RIHP TEAM	Assemble in lobby area to go out
	11.00am – 1pm	RIHP TEAM	Filming for the HEALTHY EATING/GO TO SCHOOL/POSITIVE BEHAVIOUR AROUND YOUNG PEOPLE
	CAIRNS PLAYERS BE BACK BY 3PM	Kiona Jones	
	4.00pm- 5.30pm	ALL TEAM MEMBERS	PREPARATION FOR NEXT GAME – PLACE AND TIME TO BE CONFIRMED
	5.45pm	Bus arrives to take to playing fields  Matt Cook  Julie McNeil pay the bus driver	CCAB-Game on 1st March vs SCC 21 Evans Road SINGAPORE CRICKET CLUB LADIES TEAM -

## 2012 RIHP NTH QLD RUBIES SINGAPORE TOUR

<a href="http://www.streetdirectory.com/asia_travel/travel/travel_id_29414/travel_site_27152/5/">http://www.streetdirectory.com/asia_travel/travel/travel_id_29414/travel_site_27152/5/</a>	7.00PM	ALL TEAM MEMBERS	GAME 15 Certificates AFTER GAME CHANGE AT FIELDS GO TO SCC FOR DINNER Rubies Polo Shirts/Black pants and shoes
	8.45PM		DEPART TO SINGAPORE CRICKET CLUB
	9.15PM		DINNER AT SINGAPORE CRICKET CLUB
Friday 2 <sup>nd</sup> March 2012	Morning - TBA	RIHP Team and others	Breakfast with the Orangutangs at Singapore Zoo
		David and Malcolm	Check out Dinner options for Friday PM
	Afternoon 4.15pm training with Cairns teams at Padang subject to weather		6's training and tournament final preparation
	6.30pm – 7.30pm		Managers Meeting and Function
	7.30pm		Dinner with Cairns Teams Place to be advised
	TBA	RIHP TEAM MEETING JULIE'S ROOM	<ul style="list-style-type: none"> <li>- CONFIRM DRAW</li> <li>- TIMETABLE FOR SATURDAY</li> <li>- ROLES</li> <li>- RESPONSIBILITIES</li> <li>- OTHER MATTERS</li> </ul>
Saturday 3 <sup>rd</sup> and			International Singapore 6's competition and finals
	8.00am	RIHP Team	Assemble to go to the Fields <ul style="list-style-type: none"> <li>- Equipment</li> <li>- First aid</li> <li>- Water</li> <li>- Etc</li> </ul> Will not be back until the evening Return to hotel
	5.30pm – if possible	RIHP Rubies	Team meeting – place to be

## 2012 RIHP NTH QLD RUBIES SINGAPORE TOUR

---

	if not after the dinner		advised
	6.30pm	RIHP Team	Go to competition dinner Heroes and villains
	10.30pm	RIHP TEAM MEETING	PLAN SUNDAY'S POSITION
			Maybe a team meeting
Sunday 4 <sup>th</sup> March 2012	8.00AM	RIHP TEAM	- ASSEMBLE FOR GAMES
			- All day at the fields - Finals day
	TBA	RIHP TEAM MEETING	- Reviews - Assessments - Feedback - Monday arrangements
		RIHP TEAM	- Dinner
Monday 5 <sup>th</sup> March 2012		RIHP TEAM	- Free Day in Singapore - Arrangements to be confirmed
	Travel	Team Members	Depart Singapore 10.30pm Return to Cairns 6 <sup>th</sup> march 2012 at 9.45am
Tuesday 6 <sup>th</sup> March 2012	Travel to Rockhampton	Lucretia Shyneal Jasmine	Depart cairns 12.45pm DJ 782 Depart Brisbane 3.45pm And arrive Rockhampton 4.55pm
	Travel to Brisbane	Adrian Estrich	Depart cairns 12.45pm DJ 782 Arrive Brisbane 2.55pm
	Travel to Mackay	Samantha Morganson	QF 2307 Depart Cairns 1.30pm Arrive Mackay 3.30pm

## 2012 RIHP NTH QLD RUBIES SINGAPORE TOUR



### WHAT TO WEAR AND WHEN

<i>Date/Time</i>	<i>Event</i>	<i>Uniform</i>	<i>Other</i>
<i>Monday 27<sup>th</sup> Feb</i>	<i>Training</i>	<i>Training Uniform You will receive Polo shirts</i>	<i>Sticks and Stick bags to be available by RIHP</i>
	<i>Uniform Presentations</i>	<i>RIHP Polo Shirts Black shorts/pants/skirt Shoes/No thongs</i>	<i>Sticks and Stick bags to be available by RIHP - Take sticks and stick bags</i>
<i>Tuesday 28<sup>th</sup> Feb</i>	<i>Travelling Day</i>	<i>RIHP Polo Shirts Black shorts/pants/skirt Shoes/No thongs</i>	<i>Stick bag in luggage</i>
<i>Wednesday 29<sup>th</sup> Feb</i>	<i>Training</i>	<i>RIHP Training Singlets</i>	<i>Stick Bag RIHP Caps</i>
	<i>Travelling to and from games</i>	<i>NTH QLD RUBIES POLO'S</i>	<i>Stick Bag</i>
	<i>-v- Singapore Hockey Academy</i>	<i>11 a side uniforms supplied by the managers</i>	<i>Stick Bag</i>
	<i>Presentation after Game</i>	<i>If time to change then Rubies Polo</i>	
	<i>Dinner</i>	<i>No requirement</i>	
<i>Thursday 1<sup>st</sup> March</i>	<i>DVD Filming</i>	<i>Wear training Singlets and bring RIHP uniform</i>	<i>Stick Bay RIHP Caps</i>
	<i>Travelling to and from games</i>	<i>NTH QLD RUBIES POLO'S</i>	<i>Stick Bag</i>
	<i>-v- Singapore Cricket Club</i>	<i>11 a side uniform</i>	<i>Stick Bag</i>
	<i>Presentations after Game</i>	<i>Nth Qld Rubies Polo</i>	
	<i>Dinner at SCC</i>	<i>Nth Qld Rubies Polo Black Pants/Skirt Shoes no thongs</i>	
<i>Friday 2<sup>nd</sup> March</i>	<i>Singapore Zoo</i>	<i>NQ Rubies Polo</i>	<i>RIHP Cap</i>
	<i>Training</i>	<i>Training Singlets</i>	<i>Stick Bag RIHP Caps</i>
	<i>Dinner</i>	<i>No requirement</i>	

## 2012 RIHP NTH QLD RUBIES SINGAPORE TOUR

---

<i>Saturday 3<sup>rd</sup> March</i>	<i>Singapore 6's competition</i>	<i>NQ Rubies Uniform</i>	<i>Stick Bag RIHP Cap</i>
	<i>Competition Dinner</i>	<i>Fancy Dress Optional</i>	
<i>Sunday 4<sup>th</sup> March</i>	<i>Singapore 6's competition</i>	<i>NQ Rubies Uniform</i>	<i>Stick Bag RIHP Cap</i>
	<i>Competition Presentation</i>	<i>NQ Rubies Polo</i>	<i>RIHP Cap</i>
	<i>Dinner</i>	<i>NQ Rubies Polo</i>	
<i>Monday</i>	<i>Free Day</i>	<i>No requirements</i>	<i>RIHP Cap</i>
	<i>Travelling to airport and home</i>	<i>NQ Rubies Polo Black Shorts/Pants/ Shoes/No thongs</i>	
<i>Tuesday</i>	<i>Travelling Home</i>	<i>NQ Rubies Polo Black Shorts/Pants/ Shoes/No thongs</i>	

*CHANGES MAY BE MADE TO THIS AND OTHER SCHEDULES.*

*IF ANY-ONE IS NOT CLEAR AT ANY TIME OF*

- WHERE TO GO*
- WHAT TIME TO BE THERE*
- WHAT TO WEAR*
- OTHER MATTERS*

*CHECK WITH MANAGERS – ENA WAIANGA OR DALASSA SAVAGE*

## 2012 RIHP NTH QLD RUBIES SINGAPORE TOUR

---



### WHAT WE ARE DOING AND WHO PAYS?

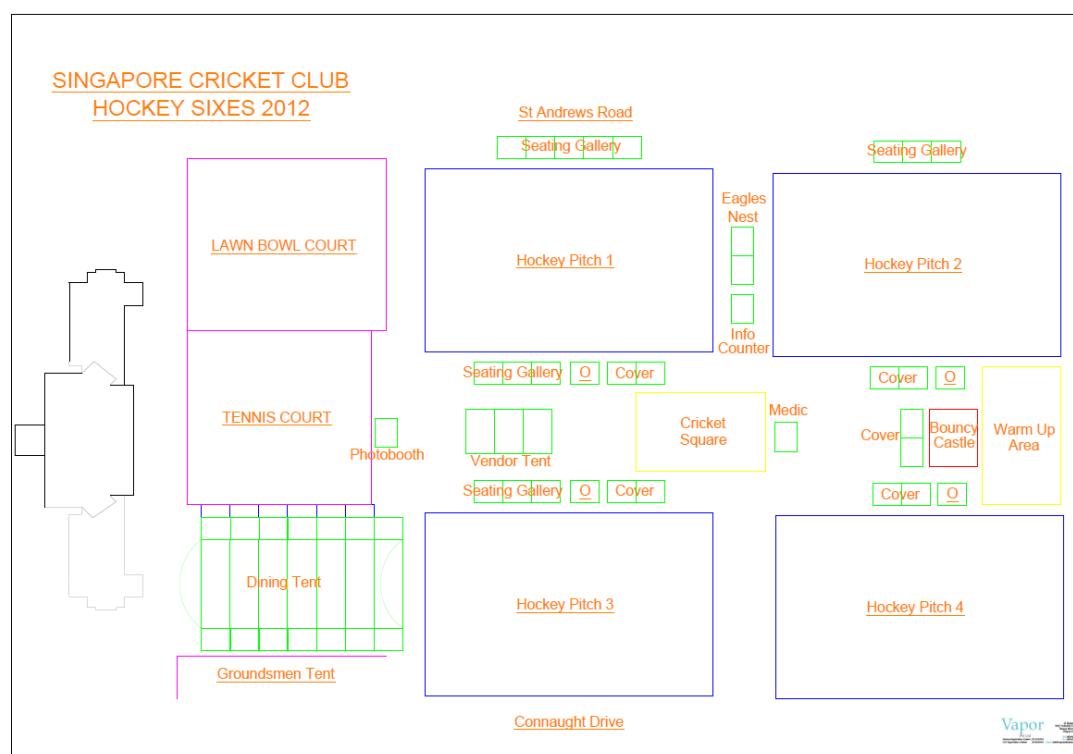
<u>Where?</u>	<u>What?</u>	<u>Who Pays?</u>
Cairns/Darwin/Singapore Airport	After check in – all costs while travelling – food etc	<b>Individuals Cost</b>
Singapore Airport	Travel Transfers to Hotel	<b>RIHP Costs</b>
Singapore Peninsula Excelsior Hotel	Room Breakfast	<b>RIHP costs</b>
	Phone calls, other incidental room costs	<b>Individual's Costs</b> <b>Please ensure all costs are paid for prior to departure</b>
Training	Travel to and from Training Fields	<b>RIHP and CHA costs</b>
11 a side games	Travel to and from Training Fields	<b>RIHP and CHA costs</b>
Singapore General	All lunches	<b>Individuals Costs</b>
	Dinner Wed 29 <sup>th</sup> Feb 2012	<b>Individuals Costs</b>
	Dinner Thurs 1 <sup>st</sup> March 2012	<b>RIHP Cost</b>
	Dinner Sat 3 <sup>rd</sup>	<b>RIHP Cost</b>
	Dinner Fri, Sun and Mon 2 <sup>nd</sup> , 4 <sup>th</sup> 5 <sup>th</sup> March 2012	<b>Individuals Costs</b>
Singapore 6's	Ice Physiotherapy First Aid	<b>RIHP and Singapore Cricket Club</b>
Singapore Zoo Trip	Tour Costs	<b>RIHP Costs</b>
Singapore Airport Return	Travel from Hotel to Airport	<b>RIHP Costs</b>
	After check in – all costs while travelling	<b>Individuals</b>
Overall	Any other expenses not mentioned	<b>Individuals Costs unless authorized by RIHP program</b>

**Please make sure you are prepared and have money available when required. It is not recommended that you travel and go out with large amounts of cash. ATM'S are readily accessible to obtain cash all over SINGAPORE**

# 2012 RIHP NTH QLD RUBIES SINGAPORE TOUR

## ABOUT SINGAPORE INTERNATIONAL 6'S

### *Plan of the Padang*



### **Tournament Timetable – At a Glance**

	<u>Time</u>	<u>Venue</u>
<b><u>Friday 2 March 2012</u></b>		
Team Briefing for Managers & Captains	6:00pm	Gilmour Room
Reception for Teams	7:30pm	Padang Restaurant
<b><u>Saturday 3 March 2012</u></b>		
League Competition	Men's A, B, C, D, E, F Ladies' F, G, H, I	8:00am Pitches 1, 2, 3, 4 to 6pm
Official Tournament Dinner & Dance	7:30pm	Marquee (in front of the SCC Clubhouse)
<b><u>Sunday 4 March 2012</u></b>		
Bowl Competition	Men's First Round	10.00am Pitches 1, 2, 3 & 4

## 2012 RIHP NTH QLD RUBIES SINGAPORE TOUR

---

Plate Competition 3 & 4	Men's First Round	10.00am	Pitches 1, 2,
Cup Competition 2	Men's First Round	10.20am	Pitches 1 &
Bowl Competition	Ladies Quarter-Finals	10:40am	Pitches 1, 2, 3 & 4
Plate Competition	Ladies Quarter-Finals	11:00am	Pitches 1, 2, 3 & 4
Cup Competition	Ladies Quarter-Finals	11:20am	Pitches 1, 2, 3 & 4
Bowl Competition	Men's Quarter-Finals	11:40am	Pitches 1,2, 3 & 4
Plate Competition	Men's Quarter-Finals	12:00pm	Pitches 1, 2, 3 & 4
Bowl Competition 2	Men's Semi-Finals	12:20pm	Pitches 1 &
	Ladies Semi-Finals		
Plate Competition 2	Men's Semi-Finals	12:40pm	Pitches 1 &
	Ladies Semi-Finals		
Cup Competition 2	Men's Semi-Finals	13:20pm	Pitches 1 &
	Ladies Semi-Finals		

### Rolling of Pitch

### 2:30pm Pitch 1

Bowl Competition	Ladies' Final	3:00pm Pitch 1
	Men's Final	3:30pm Pitch 1
Plate Competition	Ladies' Final	4:00pm Pitch 1
	Men's Final	4:30pm Pitch 1
Cup Competition	Ladies' Final	5:00pm Pitch 1
	Men's Final	5:30pm Pitch 1

**Presentation of Prizes 6:15pm**

**Sixes Marquee**

### Introduction to the Tournament

Welcome to the Singapore Cricket Club's 18th International Hockey 6s Tournament, to be held on Saturday/Sunday 3<sup>rd</sup> & 4<sup>th</sup> March 2012. The Tournament is organised under the

---



## 2012 RIHP NTH QLD RUBIES SINGAPORE TOUR

---

auspices of the Singapore Cricket Club (SCC) Hockey Section. From modest beginnings in 1992, the SCC International Hockey 6s Tournament has grown in both size and stature. Success depends on all those who give up their time to ensure the smooth running of the Tournament, along with you the participants.

We have prepared this Official Tournament Manual to provide you with information about the SCC; guidelines on Tournament participation; Tournament logistics; Team Registration; Official Tournament Rules; the format and schedule of the Tournament along with other important information. We do ask that you carefully read through the Tournament Manual before your arrival in Singapore.

Below is a brief summary of the Tournament logistics, format and schedule of the key activities. Additional details can be found in the subsequent sections.

1. The Tournament will commence on Saturday 3 March 2012 at 0800 hours and on Sunday 4 March at 0900 hours. The Chief Marshall is in charge of the Tournament. He has an important task to perform to ensure that all events are running smoothly and on schedule. In past years we have tended to run ahead of schedule (sometimes up to 15-30 minutes) so we ask that you co-operate with the Chief Marshall and check regularly on the timings for your next match.
2. The Tournament will involve 36 teams in the Men's Competition and 24 teams in the Ladies' Competition. Both Competitions will comprise of a League Competition on Saturday 3 March 2012, followed by Knock-Out Competition comprising of a Cup Competition, a Plate Competition and a Bowl Competition on Sunday 4 March 2012. The Finals of the respective Cup, Plate and Bowl Competitions will be played late on Sunday afternoon.
3. The winners and runners-up in each Competition will be presented with commemorative medals after the Final of the Men's Cup Competition on Sunday at approximately 1815 hours at the Marquee in front of the SCC Clubhouse. A cocktail reception will be held for all finalists at the Marquee after the presentation of the prizes.
4. Each team may register a maximum of 9 players to participate in the Tournament.
5. The Tournament will be held in accordance with the Official Tournament Rules of the SCC International Hockey 6s Tournament and all games will be played in accordance with the FIH "Rules of Hockey" (as modified by the Official Tournament Rules).
6. All teams, both overseas and local, must ensure that their players have insurance for injuries, hospitalisation, etc. The SCC will not be responsible for any injuries sustained by players during the course of the Tournament.
7. All overseas teams must ensure that they obtain clearance from their respective Hockey Associations to play in the Tournament.

## 2012 RIHP NTH QLD RUBIES SINGAPORE TOUR

---

8. A mandatory briefing for Managers and/or Captains of all participating teams will be held in the Gilmour Room at the SCC on Friday 2 March 2012 at 1800 hours. Please bring a sample of your team's shirts. The Briefing Meeting will be followed by a Reception for all players and team officials at 1930 hours in the Padang Restaurant at the SCC. Appropriate attire must be worn. (Please reference the Section entitled Introduction to the Singapore Cricket Club for further details).
9. The Tournament Dinner & Dance will be held on Saturday 3 March 2012 commencing at 1900 hours. Teams are reminded to be punctual for the Dinner as the entertainment programme starts at 1930 hours sharp. The theme of the dinner is "**HEROES & VILLAINS**". Ten (10) buffet dinner tickets and a cash card will be given to each team. A limited number of additional tickets for the dinner will be available at a cost of SGD30.00 each. Please confirm the number of additional tickets required for your supporters in advance. Any team that fails to attend for the Tournament Dinner & Dance will not be invited to future Tournaments. The cash card will be topped up with a certain value and the cash can be used to purchase food or drinks at the club. If the cash value of the card is exhausted, it can be topped up however this will be at the team's own cost.
10. **The registration fee for the Tournament is SGD700.00 per team and must be paid prior to the Tournament. Cheques are to be made in favour of the SINGAPORE CRICKET CLUB. Please write on the rear of cheque "Hockey 6s 2012 - (name of your team)".**

The objective of the Tournament is to generate a weekend that both spectators and players alike can enjoy. Friendships are made and renewed with teams and supporters from around the globe – yet without too much officialdom to stifle the fun of the Tournament weekend. However we do ask that you observe the guidelines and rules set forth in this Official Tournament Manual.

We very much hope that you will enjoy this year's Tournament, the SCC and its grounds, and have a great time during your stay here in Singapore. We wish you every success in the Tournament and may the best teams win!

### OFFICIAL TOURNAMENT RULES

1. The Tournament is organised under the auspices of the Singapore Cricket Club Hockey Sections and will be governed by the Official Tournament Rules of the SCC International Hockey 6s Tournament.
2. All games will be played in accordance with the FIH "Rules of Hockey" as modified by the Official Tournament Rules.

The Tournament shall be run by a Chief Marshall who shall ensure that all teams officials and players abide by the Rules and play to the spirit of the game. The Chief Marshall shall have authority to ban from the tournament or suspend for one or more matches, any team, players, team officials and other officials who, in the

## 2012 RIHP NTH QLD RUBIES SINGAPORE TOUR

---

opinion of the Chief Marshall, are guilty of misconduct or have brought disrepute to the game, before, during or after a match wherever that misconduct occurred. The decision of the Chief Marshall shall be final.

3. The FIH "Rules of Hockey" will be modified as follows :
  - (a) each team will consist of six players; a team can have a goalkeeper or kicking back but rules regarding goalkeeper privileges and restrictions will apply to kicking backs
  - (b) a match shall not commence unless a team has at least 4 players on the pitch. A team which does not have 4 players on the pitch at the commencement of the match shall be deemed to have conceded a walkover.
  - (c) the defending team on penalty corners will only be allowed to field 3 defenders.
  - (d) any other modifications specified by the Technical Committee at the Team Briefing.
4. The Tournament will be held at the Padang on grass pitches. In the event of inclement weather some games may need to be switched to an all-weather pitch. Players must bring appropriate footwear for this pitch.
5. The Tournament draw will be made by the Organising Committee, who reserves the right to seed teams at their discretion. The draw will be announced not later than at the Team Briefing. An announcement regarding colour clashes for shirts will also be made at the Team Briefing.
6. Each team will be allowed to register 9 players with a unique shirt number registered to each individual player. All player names and their shirt numbers must be included on the Team Registration Forms and faxed to (65) 6337 0119, attention Ms Kristen Mansfield, Sports Executive, by no later than 17 February 2012. **PROOF OF IDENTITY WILL BE REQUIRED.** No player may play in another numbered shirt without the prior approval of the Tournament Officials; however an outfield player playing as a kicking back will be permitted to wear an unnumbered but distinctive-coloured shirt over his numbered shirt.
7. The first-named team in the Order of Play will take the hit-off in the first half and will defend the goal nearest to the SCC Clubhouse. The same Rule will apply for each half of any extra-time.
8. Rolling substitution is permissible. All players who intend to come on to the pitch must wait for the on field player to leave the field of play first before going on to the playing pitch. Substitutes can continually come on and off during the game. Substitution is not permissible following the award of a penalty corner or penalty stroke. Any substitution is to be made at a designated area near the middle of the pitch and only on one side of the pitch, as determined by the Tournament Officials.

## 2012 RIHP NTH QLD RUBIES SINGAPORE TOUR

---

9. No player may play for more than one team; if a player is found to have breached this Rule, he will be banned from the Tournament. If a team is found to have fielded a non-registered player in a particular game, it will forfeit that game and 3 points (and a score of 2-0) will be awarded to the opposing team, irrespective of the actual result.
10. The Tournament will commence with League Competitions, the Men's Competition comprised of 5 leagues with 6 teams each and the Ladies' Competition comprised of 4 leagues of 6 teams each. Each team will play every other team in its designated league once.
11. During the Men's & Ladies' League Competitions, points will be awarded as follows:

<b>WIN :</b>	<b>3 POINTS</b>
<b>SCORE DRAW :</b>	<b>2 POINTS TO EACH TEAM</b>
<b>SCORELESS DRAW :</b>	<b>1 POINT TO EACH TEAM</b>
<b>LOSS :</b>	<b>0 POINTS</b>

If two or more teams are tied on points in a league, the teams will be ranked according to the team with the highest goal difference being placed higher in the league, and so on. If the teams are still tied then the team with the highest number of matches won will be placed higher in the league, and so on.. Should there still be a tie after applying this Rule, then the team with the highest number of goals FOR will be placed higher in the league. In the event that there is still a tie after the goal difference, number of matches won, and goals FOR is determined, then the result of the matches between the teams shall be decisive in determining the ranking. Should there still be a tie after applying this Rule, then the placing between the tied teams will be decided by the drawing of lots.

12. For the Men's & Ladies' Knock-Out Competitions, the teams will be seeded as detailed below:
  - (a) The winner and runner-up in each league will proceed to the Cup Competition and will be seeded accordingly based on their performance during the League Competitions. The above Rules in section 11 will also be used to rank the seeds from 1 to 6 for the Men's Cup Competition.
  - (b) The third and fourth placed teams in each league will proceed to the Plate Competition and will be seeded accordingly based on their performance during the League Competitions. The above Rules in section 11 will also be used to rank the seeds from 1 to 6 for the Men's Plate Competition.

*Official Tournament Rules (continued)*

## 2012 RIHP NTH QLD RUBIES SINGAPORE TOUR

---

- (c) The fifth and sixth placed teams in each league will proceed to the Bowl Competition and will be seeded accordingly based on their performance during the League Competitions. The above Rules in section 11 will also be used to rank the seeds from 1 to 6 for the Men's Bowl Competition.
  - (d) In the Knock-Out Competition the winners will continue to participate in their respective Competitions while the losers will be knocked-out of the Tournament.
13. Time keeping for each match will be handled by the Tournament Officials at the respective pitches. If the umpire needs to stop time, he will indicate to the Tournament Officials in charge of the particular pitch.
- (a) Each League match will be 6 minutes each way with a one-minute break between halves.  
  
**If the Tournament is running behind schedule, for whatever reason, the duration of League matches will be reduced as required to get back on schedule.**
  - (b) Each Knock-Out Competition match (other than the Finals) will also be 7 minutes each way with a one-minute break between halves.
  - (c) The Finals of each Competition will be 10 minutes each way with a two-minute break at half-time.
14. The Penalty Shoot-Out format only comes into effect during the Knock-Out Competition and Finals, as detailed below:
- (a) In the event of the score being level at the end of normal time in any match during the Knock-Out Competition, there will not be any extra time played and a penalty shoot-out will ensue. Sudden-death extra time will only be played in the Finals of each Competition. Sudden-death extra time will be 3 minutes each way with a one-minute break between halves. If in a Finals match no goals are scored in extra time, then a penalty shoot-out will ensue.
  - (b) Where scores are still level after the match has been played then the winner will be determined by a penalty shoot-out. The format of the shoot-out is alternate one-on-one challenges between a player and the opposing goalkeeper or kicking back.
  - (c) Each shoot-out begins at the "23m line" and the ball is brought into the dee for scoring. The player with the ball has exactly 10 seconds to put the ball into goal. The player with the ball may take more than one shot at goal. However once the ball goes out of play, the challenge ceases.

## 2012 RIHP NTH QLD RUBIES SINGAPORE TOUR

---

### Official Tournament Rules (continued)

- (d) 3 players from each team must be nominated for the penalty shoot-out. A toss of a coin will decide which team goes first and the one-on-one challenges will be taken alternately. If the score is still level after the 3 shoot-outs, each team will continue to nominate players to alternately take one-on-one challenges on a sudden-death basis. A player may not take another one-on-one challenge unless all the registered players on the team have already taken one, with the exception of the goalkeeper or kicking back.
- (e) If a player taking part in the shoot-out commits any infringement, then the shoot-out ceases. Similarly, if a goalkeeper or kicking back commits any infringements, a goal will be awarded by the umpire.
15. Team Managers are responsible for ensuring their teams are on the correct pitch and in the correct shirts by the scheduled time for each match. Two minutes grace period for late arrivals may be permitted at the discretion of the Tournament Officials but after any permitted grace period the team which is ready to play will be awarded that match with 3 points (and a score of 2-0). A team will not be deemed to be ready for play unless it has at least 4 of its players on the field of play.
16. If a player is shown a **RED CARD** by an umpire, he will be suspended from the next two matches in which his team plays. Any player shown **TWO RED CARDS** will be banned from the Tournament. Any player shown **TWO YELLOW CARDS** will be suspended for the next match in which his team plays. Any player who has already received two yellow cards (and a one-match suspension) will receive a one-match suspension for each subsequent **YELLOW CARD** he is shown during the Tournament. The duration of suspension for a **YELLOW CARD** awarded in a match shall be 2 minutes.
17. Match hockey balls will be supplied by the Tournament Officials and must be returned to the officiating umpires at the end of each match.
18. Drinks may be taken at any time during a game at the players' stand area. Players may not leave the field of play at half-time unless they are being substituted. Team officials may not enter the field of play at any time without first obtaining the umpire's permission.
19. All matches will be officiated by two umpires appointed by the Singapore Hockey Federation Umpires Committee. Their decisions on the field of play will be final and no appeals against their decisions will be entertained.
20. Prizes will be awarded to the Winners & Runners-up of the Men's & Ladies' Cup, Plate & Bowl Competitions. Cash prizes may be offered at the discretion of the Organising Committee.

## 2012 RIHP NTH QLD RUBIES SINGAPORE TOUR

---

21. **ALL DISPUTES, QUERIES OR OBJECTIONS NOT COVERED BY THE ABOVE RULES WILL BE REFERRED TO THE CHIEF MARSHALL WHOSE DECISIONS AND RULINGS WILL BE FINAL.**
22. The Organising Committee reserves the right to alter the format of the Tournament if it deems fit.

### **PLAYERS' INSURANCE**

***The Singapore Cricket Club (SCC) provides First Aid Personnel, Physiotherapists and Doctors for the duration of the Tournament, who are able to handle all minor injuries. The SCC also ensures that medical transportation is either immediately or quickly available for any more serious injuries, which may require hospitalisation.***

All participating teams are asked to ensure that their players are adequately insured if hospital treatment or full hospitalisation is unfortunately required. For all overseas teams this **must** be arranged before arriving in Singapore

### **SINGAPORE CRICKET CLUB**

#### ***Premier Sports and Social Club***

Established in 1852, the Singapore Cricket Club is today a premier sports and social club in Asia. It is the second oldest sports club in Singapore, junior by 10 years to the Singapore Sporting Club, now the Singapore Turf Club. The Club stands at the centre of the city's colonial heart, a public space that has witnessed many of Singapore's triumphs and defeats, upheavals, independence and, finally, the annual National Day Parades on 9 August.



Nearby historic buildings include Raffles Hotel, St Andrew's Cathedral, City Hall (on the steps of which the Japanese surrendered to the British in 1945), the Old Supreme Court (to re-open with City Hall as the National Art Gallery of Singapore in 2014), Old Parliament House (now the Arts House), Victoria Theatre and Memorial Hall, and Empress Place Building (formerly government offices and now the Asian Civilisations Museum).



Cricket was played on the Padang as early as 1837, only 18 years after Sir Stamford Raffles founded the settlement of Singapore in 1819, but it was not until 1852 that the first meetings were called to discuss the formal establishment of a cricket club. There have been no fewer than three clubhouse buildings on the Padang, the first erected some time in the 1860s, the second in 1877. The third pavilion, which forms the core of the present clubhouse building, was built in 1884. It was extended in 1907, and the northern and southern wings that we see today were added in 1922.

#### **.Humble Beginnings**



The Club's beginnings were quite humble with the first 28 members in 1853 being

## 2012 RIHP NTH QLD RUBIES SINGAPORE TOUR

---

mostly men working in the British businesses and mercantile community usually as clerks or junior assistants. In the 1880s, however, membership had grown to almost 400 and was seen as a social feather in the cap not only by the businessmen who founded the Club but also by the power-brokers and decision-makers in government. Presidents in the early days of the Club included several governors of the then Straits Settlements, such as Sir Cecil Clementi Smith, Sir Frank Athelstane Swettenham, Sir Arthur Henderson Young.

It was not all cricket on the Padang. Lawn Bowls began at the Club in the 1870s while an annual tennis tournament was initiated in 1875. Both Soccer and Rugby were established in the 1880s, and Hockey arrived in early 1892. Membership had reached 878 by 1914. World War I affected Singapore sort badly, however (although the crown colony was not directly affected) and the supply of sporting manpower was sharply reduced.

Cricket suffered in particular and in 1922 the Club was not able to make up a full team to send to play in Hong Kong. Morale must have been improved by the visit in 1927 of Charles Gordon Macartney and his Australian Cricket XI, Macartney's team, which included eight test cricketers, actually lost one match against Malaya. Another major cricketing event occurred 10 years later in 1937, a three day match between Malaya and Sir Julien Cahn's XI, the first English cricket team to visit Malaya.

On 15 February 1942, Singapore fell to the Japanese, and most Europeans who had not escaped were interned. The Club was closed for the duration of the war.



**Lord Louis Mountbatten arrives to accept the Japanese surrender at City Hall in 1945**

Even after Singapore was liberated, in 1945, it was clear that life in the crown colony would never be the same again. Elections in 1959 were won easily by Lee Kuan Yew's People's Action Party, which proceeded to form a strong majority government in a self-governing Singapore.

It was reported that the new government was considering taking back the Padang from its lessees, the Singapore Cricket Club and the Singapore Recreation Club. In the event this did not happen, but the government did insist, in 1962, that all clubs in Singapore maintain at least 50 per cent Singaporean membership. Prime Minister Lee made his first official

## 2012 RIHP NTH QLD RUBIES SINGAPORE TOUR

---

appearance at the Club in 1963, when his wife presented the Lee Kuan Yew Shield to the Club's ladies' hockey team. He returned in 1970 to accept the honorary title of "Visitor" to the Club.

### Significant events

Between 1959 and the early 1970s, numerous cricket teams of Test or first class standard visited Singapore and graced the Padang. The most notable of these were:

- The Australian Test team to India and Pakistan in 1959.
- The MCC team to New Zealand in 1961.
- Ron Roberts' Commonwealth XI in 1962.
- E.W. Swanton's Commonwealth XI in 1964.
- Joe Lister's International XI in 1968.
- The MCC XI on its East African and East Asian tour in 1970.
- The Indian and Pakistan Test teams returning from their tours of Australia in 1968 and 1972 respectively also visited Singapore. Unfortunately, their one-day fixtures were washed out.

Although the future of the Club looked grim during the 1960s, because of declining membership, financial difficulties and the possibility of government action, it survived (largely because of the sterling work of Club President Andrew Gilmour, after whom the Gilmour Room is named), and during the 1970s and 1980s it began to prosper once more. Concern for the community became a hallmark of the Club during the 1980s, the most outstanding example of this being an SCC Extravaganza charity day in 1984, in which year Singapore celebrated 25 years of self-government. The event raised \$285,000 for the Community Chest of Singapore.

Seven-a-side rugby teams had competed for the Ablitt Cup since as long ago as the 1940s, but it was not until the 1980s that the SCC Rugby Sevens was expanded to become a truly international competition.

The SCC Soccer Sevens has become an equally popular annual event, and in 1991 it was enhanced by the presence of British soccer stars Gordon Banks, Bobby Charlton, Roger Hunt, Geoff Hurst, Martin Peters (all members of the England team that won the 1966 World Cup), Mike England, Pat Jennings, Kevin

### **Keegan and Tony Woodcock.**

The highlight of 1991 was the visit of Singapore President Wee Kim Wee on 6 December, and his acceptance of honorary membership of the Club.

Another event in 1991 of interest in the context of the Club's history was the discovery of the oldest sports trophy the Club has in its possession - a Challenge Cup presented to the Club by Vice-Admiral C.B. Hamilton and officers of the British ships visiting Singapore in 1887, in commemoration of the many games the British Navy had enjoyed on the Padang.

### Anniversaries and the Future



## 2012 RIHP NTH QLD RUBIES SINGAPORE TOUR

---

In 1992, the Club celebrated its 140th anniversary and organised various functions to raise funds for charity as part of the celebrations. The most memorable event was the 140th anniversary party held on the Padang on 30 October, which was graced by President and Mrs Wee.

**An SCC Hockey Sixes competition was inaugurated in 1992. In October 1993, the Singapore Cricket Association organised the first International Cricket Sixes tournament on the Padang, in which teams from 10 countries participated.**

On 29 May 1996, the Club passed several landmark resolutions - to embark on a \$60- million Clubhouse redevelopment that will involve building two storeys underground, create a new class of transferable membership and give women full membership for the first time in the history of the Club.

In November 1997, the Club started offering a new class of transferable membership.

In the late 1990s, the SCC International Rugby Sevens attained the status of a top international club tournament. In 1998, the New Zealand Rugby Sevens Commonwealth team featuring rugby legend Jonah Lomu visited the Club and played on the Padang. In the same year, Petone from New Zealand, featuring another Kiwi legend, Tana Umaga, won the Ablitt Cup at the Padang.

The status of the Club as a premium institution in Singapore was again underlined when Mr S.R. Nathan – a long-time member of the Club - was elected President of the Republic of Singapore in 1999. The millennium year saw a complete re-turfing and repair of the Padang field, including an improved drainage system. The year was also marked by the courtesy visit of His Royal Highness Prince Norodom Ranariddh from the Kingdom of Cambodia.

In 2002, the Club celebrated its 150th anniversary with a year of festive activities organised by the specially formed anniversary committee. Among the highlights of the anniversary year was a charity golf match attended by Prime Minister Goh Chok Tong and Mrs Goh. The anniversary celebrations culminated with a gala dinner at the Padang on 5 October.

A week later, on 12 October 2002, a terrorist bomb in Bali tragically killed eight Club Members who were visiting the island to represent the Singapore Cricket Club in the annual Bali International Rugby 10s tournament.

On 1 December 2003, a year after the 150th anniversary, a Special General Meeting of Members approved the most extensive Club renovation since 1922.

Work was completed three years later, and on 2 February 2007 the Club held a dinner to celebrate the renovation. The guest of honour was Senior Minister Goh Chok Tong, who accepted the title of "Visitor", making him the second recipient of that honorary title after Lee Kuan Yew in 1970.

Today, the Club boasts a total of some 5,678 active members, of whom 3,100 are voting members. There are currently 12 sports sections in the Club, the largest being Golf (551 members), Tennis (443) and Squash (361).



# 2012 RIHP NTH QLD RUBIES SINGAPORE TOUR

## 11 A SIDE GAMES AGAINST SINGAPORE HOCKEY ACADEMY

Sengkang Hockey Stadium

### Location

Serving the residents of Sengkang, a new suburb in the north-eastern part of Singapore, Sengkang Hockey Stadium is part of the Sengkang Sports & Recreation Centre.



### History

Situated in Sengkang new town, a relatively young satellite residential town, Sengkang Hockey Stadium is part of the newly opened Sengkang Sports & Recreation Centre. The Sengkang Sports & Recreation Centre houses a community club, swimming pools, indoor sports hall, gymnasium, dance studio, and retail and eating outlets.

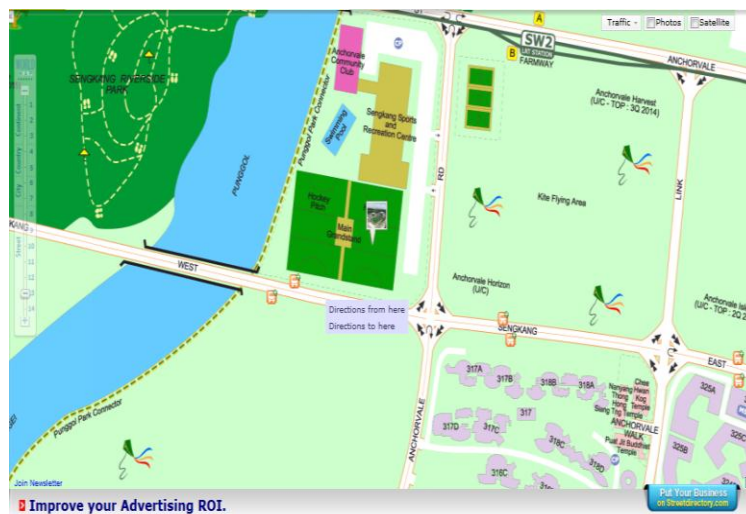
Equipped with two new **hockey** pitches, Sengkang Hockey Stadium will be hosting the Men's Junior World Cup in June 2009.

### How to get there

Sengkang Hockey Stadium is five minutes walk away from the Farmway LRT station. To get to the LRT station, transfer at Sengkang MRT Interchange Station.

### Address

57 Anchorvale Road  
Singapore 544964



# 2012 RIHP NTH QLD RUBIES SINGAPORE TOUR

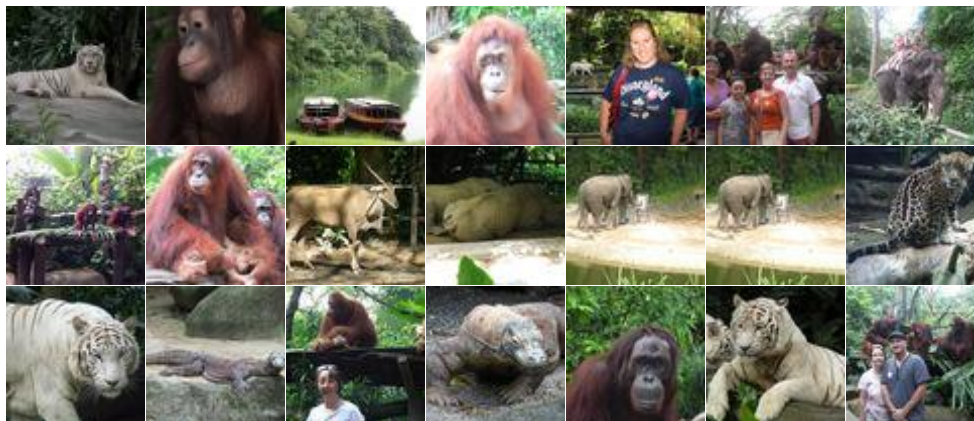
## GAMES AGAINST SINGAPORE CRICKET CLUB LOCATION ON FIELDS



## SINGAPORE ZOO – BREAKFAST WITH THE ORANGUTANS

See the orangutans at Singapore Zoo on a morning tour from Singapore, with the option of enjoying a wild breakfast with these fascinating animals. Singapore Zoo has the world's most successful orangutan-breeding program, and the largest social colony of these highly intelligent primates. Don't miss the opportunity to photograph and interact with the orangutans as they swing and climb in their naturalistic enclosure. And if you choose to eat breakfast with the orangutans it will be an experience you'll never forget.

### Recent Photos of this Tour



## 2012 RIHP NTH QLD RUBIES SINGAPORE TOUR

---

You will also have a close-up visit with a reticulated python, the longest snake in the world. After your breakfast in the wild, take a tram ride around the Open Zoo, a new concept in animal-keeping featuring landscaped gardens and minimal cages. Passengers who do not select the breakfast option will be given free time to explore the zoo.

Singapore Zoo is in the north of the island at Mandai, by the serene Seletar Reservoir, and is immensely proud of its orangutan-breeding program. By focusing on these magnificent creatures, whose plight symbolizes the disappearance of tropical rainforests around the world, the zoo hopes to nurture a respect and deep appreciation of nature in all who visit the zoo.



Singapore Zoo Morning Tour with optional Jungle Breakfast amongst Orangutans

### **Departure place and time**

- Managers will advise details
- Hotel pick up and return

### **Duration:**

4 hours (approx.)

### **Return details:**

Tour returns to original departure point at approximately 12:00pm

## 2012 RIHP NTH QLD RUBIES SINGAPORE TOUR

---

**HOCKEY QUEENSLAND CODES OF BEHAVIOUR GENERAL MANAGEMENT POLICY –  
CODES OF BEHAVIOUR PAGE 6 RELEASE DATE: 29 October 2007 UPDATED: 1  
JANUARY 2010 {Ref: manuals/hq/policydocuments/codesbehaviour2010}**

### **Players Code of Conduct**

1. Respect the rights, dignity and worth of fellow players, coaches, officials and spectators
2. Do not tolerate acts of aggression
3. Respect the talent, potential and development of fellow players and competitors
4. Care for and respect the equipment provided to the player as part of their programme.
5. Be frank and honest with the coach concerning illness and injury and the ability to train fully within the programme requirements.
6. At all times avoid intimate relationships with your team administration.
7. Conduct themselves in a professional manner relating to language, temper and punctuality
8. Maintain high personal behaviour standards at all times
9. Abide by the rules and respect the decision of the official, making all appeals through the formal process and respecting the final decision.
10. Be honest in the player's attitude and preparation to training. Work equally hard for the player and the team.
11. Co-operate with coaches and staff in development of programmes to adequately prepare you for competition at the highest level.
12. Adhere to the Anti-Doping Policy advocated by Hockey Queensland.
13. Abide by all relevant policies documented by Hockey Queensland in relation to selection.
14. Abstain from the use of tobacco and the consumption of alcoholic beverages whilst in uniform and under the control of the coach and manager.

### **Spectators Code of Conduct**

1. Spectators are an important part of the game and shall at all times conform to accepted standards of good sportsmanship and behaviour.
2. Spectators shall at all times respect officials, coaches and players and extend all courtesies to them.
3. Lead by example and respect all players, coaches, umpires and spectators – physical or verbal abuse will not be tolerated.
4. Respect the umpires' decision. Do not abuse, threaten or intimidate an umpire or match official and do not show dissension, displeasure or disapproval towards an umpire or match official's decision in an abusive or unreasonable fashion.
5. Never publicly criticise umpires – raise personal concerns with club/association officials in private
6. Support skilled performances
7. Show respect for opponents

## 2012 RIHP NTH QLD RUBIES SINGAPORE TOUR

---

8. Display appropriate social behaviour by not using profane, demeaning or derogatory language, or harassing players, coaches, officials or other spectators.
9. Do not throw any object.
10. Barrack in a positive way.
11. Leave the area tidy and free from litter or other mess.
12. Remember that you are there for the participants to enjoy the game
13. Never ridicule mistakes or losses – supporters are there to support not downgrade
14. Recognise all volunteers who are giving up their valuable time
15. The umpire may issue a warning to the team captain, of the spectators which are breaking the code of behaviour, to let the spectators know that their team will lose points if they continue to behave in a manner not inline with the code of behaviour.

### ***Team Administration Code of Conduct (Manager and other appointed officials)***

Team Administration must meet the following requirements in regard to their conduct during any activity or event to which they have been appointed to by Hockey Queensland.

1. Treat all players with respect at all times.
2. Ensure the athlete's time spent with the Team Administration is a positive experience.
3. Treat each athlete as an individual.
4. Be impartial and maintain integrity in the Team Administration relationship with other officials, players and coaches.
5. Make a commitment to providing a quality service to your athletes.
6. Avoid situations that may lead to a conflict of interest.
7. Be courteous, respectful and open to discussion and interaction.
8. Provide a safe environment for training and competition.
9. Be a positive role model in behaviour and personal appearance by maintaining the highest standards of personal conduct and projecting a favourable image of hockey and officiating at all times.
10. Refrain from any personal abuse towards players.
11. Show concern and caution towards ill and injured athletes. Enforce the blood rule and apply procedures regarding ill or injured players according to the rules.
12. Abstain from the use of tobacco and the consumption of alcoholic beverages when performing your official duties or whilst in uniform.
13. Adhere to the Anti-Doping Policy advocated by Hockey Queensland.
14. Abide by all relevant policies documented by Hockey Queensland in relation to you appointment.
15. Actively discourage the use of performance enhancing drugs and the use of a consumption of alcohol, tobacco and illegal substances.

## 2012 RIHP NTH QLD RUBIES SINGAPORE TOUR

---

### ***Coaches Code of Conduct***

The coach's primary role is to facilitate the process of individual development through achievement of athletic potential. This role accepts the athletes' long term interest as of greater importance than short-term athletic considerations. To fulfil this role the coach must behave in an ethical manner respecting the following points:

1. To agree to respect the basic human rights, that is the equal rights, of each athlete under control with no discrimination on the grounds of sex, race, colour, language, religion, national or social origin, association with a national minority, birth or other status.
2. To agree to respect the dignity and recognise the contribution of each individual. To ensure that the practical environment is safe and appropriate, this appropriateness will take into consideration the age, maturity and skill level of the athlete
3. To agree to ensure that all equipment used in the activities, are safe for the users and that the supervision provided for these activities within each session is adequate.
4. To agree to plan sessions adequately and activities within, by using appropriate teaching progressions so as to reduce the risk of possible injury
5. To agree to identify and to evaluate athletes with injuries and incapacities so as the workload and performance expectations are modified accordingly.
6. To agree to warn all athletes under control of the inherent risks of the sport/individual events with continual reinforcement being ongoing so as each athlete appreciates those risks.
7. To agree to evaluate the skill level and experience of each athlete in the group so as mismatching of athletes can be kept to a minimum.
8. To agree to advise all athletes under control the rules of the hockey events so as the athletes respect these rules and the spirit of the rules as they are intended.
9. To agree to respect the image of the coach and to continuously maintain the highest standards of personal conduct reflected in both the manner of appearance and behaviour.
10. To agree not to smoke whilst coaching, nor consume alcoholic beverages so soon before coaching that:
  - a. the smell of alcohol is still obvious,
  - b. it affects the competence to coach.
11. To agree that the authority to discipline athletes under control extends only to minor infractions (ie attentiveness) and that any serious disciplinary breach must be referred to Hockey Queensland Management for their attention.
12. To agree to abide by the general rules of the Hockey Queensland constitution and by-laws so as not to bring the association into disrepute.
13. To agree to abide by the general rules outlined in the State Coaches Contract.
14. To observe all written codes of behaviour as prescribed and produced by Hockey Queensland Inc.
15. To beware, understand and follow the rules and responsibilities as for Coaches as prescribed and produced by Hockey Queensland Inc.
16. To beware, understand and follow all protective measures as outlined in the policy.

**RIHP AND CAIRNS ACADEMY – 11 A SIDE GAMES**

**TEAM MEETING NOTES**

# 2012 RIHP NTH QLD RUBIES SINGAPORE TOUR

---

## *RIHP AND CAIRNS ACADEMY – 11 A SIDE GAMES*

### *TEAM MEETING NOTES*

## 2012 RIHP NTH QLD RUBIES SINGAPORE TOUR

---

### ***RIHP NTH QLD RUBIES – SINGAPORE 6'S PREPARATION AND TEAM MEETING NOTES***

# 2012 RIHP NTH QLD RUBIES SINGAPORE TOUR

---

## ***RIHP NTH QLD RUBIES – SINGAPORE 6'S PREPARATION AND TEAM MEETING NOTES***

# 2012 RIHP NTH QLD RUBIES SINGAPORE TOUR

---

## ***RIHP NTH QLD RUBIES – SINGAPORE 6'S PREPARATION AND TEAM MEETING NOTES***

# RIHP NTH QLD RUBIES 2012 SINGAPORE TOUR TEAM DIARY



# 2012 RIHP NTH QLD RUBIES SINGAPORE TOUR

---

RIHP NTH QLD RUBIES  
2012 SINGAPORE TOUR  
TEAM DIARY

***DAY 1***

# 2012 RIHP NTH QLD RUBIES SINGAPORE TOUR

---

RIHP NTH QLD RUBIES  
2012 SINGAPORE TOUR  
TEAM DIARY

**DAY 2**

# 2012 RIHP NTH QLD RUBIES SINGAPORE TOUR

---

RIHP NTH QLD RUBIES  
2012 SINGAPORE TOUR  
TEAM DIARY

**DAY 3**

# 2012 RIHP NTH QLD RUBIES SINGAPORE TOUR

---

RIHP NTH QLD RUBIES  
2012 SINGAPORE TOUR  
TEAM DIARY

**DAY 4**

# 2012 RIHP NTH QLD RUBIES SINGAPORE TOUR

---

RIHP NTH QLD RUBIES  
2012 SINGAPORE TOUR  
TEAM DIARY

**DAY 5**

# 2012 RIHP NTH QLD RUBIES SINGAPORE TOUR

---

RIHP NTH QLD RUBIES  
2012 SINGAPORE TOUR  
TEAM DIARY

**DAY 6**

# 2012 RIHP NTH QLD RUBIES SINGAPORE TOUR

---

RIHP NTH QLD RUBIES  
2012 SINGAPORE TOUR  
TEAM DIARY

**DAY 7**

# 2012 RIHP NTH QLD RUBIES SINGAPORE TOUR

---

RIHP NTH QLD RUBIES  
2012 SINGAPORE TOUR  
TEAM DIARY

**DAY 8**



# ***LEADING THE WAY***