



**HOCKEY QUEENSLAND
REMOTE & INDIGENOUS
HOCKEY PROGRAM**

ANNUAL REPORT

2009



CONTENTS

Reflections of the Remote Program	3
Executive Summary	4
Active Participation	5
Coaching and Training	5-7
Competitions – Karumba	7-8
Gulf v Cape/Torres Hockey Challenge	8
Talent Identification and Development	9
Q150 Partnership	10-11
Hockey Art goes International	11-12
Indigenous Sport and Recreation Funding	12
Web Site Development	12-13
Equipment and Facilities	13
Planning and Future Developments	14-15
Acknowledgements	16



Sunset at the tip of Cape York



Croc Slide – Albert River Burketown

REFLECTIONS OF THE REMOTE HOCKEY PROGRAM

*We recognise that we must be close
The heat permeates through our body and bones
making us feel alive
It could be the Islands of the Torres Strait
It could be the communities of the Gulf Savannah
It is the HQ Remote Hockey Program*

*Yesterday it was a lake reflecting the devastation
of flooding in the community*

*Tomorrow it is the 1st hole of competition at the
Karumba Golf Club*

*Today the open field is the venue for the
Gulf -v- Cape/Torres Hockey Challenge*

Forever – it is the value of community

*It hears and feels laughter, anguish, joy and
disappointment*

It offers hope, opportunity, reward and success

*It teaches skills, patience, understanding, discipline
and dedication*

It reflects who and what we are

*Whatever it takes from you in time and maintenance –
you get back ten times in return*

It finds you friends and supporters

It holds a million years of stories

One of which is part of yours

*It is as dangerous as it is beautiful –
It is Remote Hockey - Queensland*



EXECUTIVE SUMMARY

The Remote Hockey Program has always set the highest of expectations in the aim to secure the sustainability of hockey as a non-traditional sport in remote, indigenous and Islander communities. To ensure these expectations are met, the Remote Program in 2009 set standards of excellence and best practices for Program Delivery.

Maintaining these high standards of delivery does not come without difficulties but the ultimate reward is gaining and maintaining the respect of the members of the remote, indigenous and Islander communities. This respect is the essential building block that all program delivery is based.

Confidence and support from partners coupled with the highest standards for delivery and expectation for success has proven that hockey as a non-traditional sport has a place in remote, indigenous and Islander communities.

Highlights that will be detailed further in the Report include:-

- The delivery of the first inter regional competition between remote, indigenous and Islander communities through the Gulf –v Cape/Torres Hockey Challenge
- The development and delivery of Tafe recognized hockey coaching programs specifically modified to meet the needs of the remote, indigenous and Islander communities
- Talent Identified Programs which culminated in the first Thursday Islander young girl being selected for Cairns to compete in State Championship
- The development and delivery of hockey participation programs through partnerships with Active After School Communities Program, Gulf Sport and Recreation Association, Tagai State College and community organizations

- The development and publication of [www. remotehockey.com](http://www.remotehockey.com) as a widespread form of communication, mentoring and coaching tool

- Widespread leadership and mentor Programs designed to engage, support and advance individual skills necessary for the sustainability of the hockey programs

- Highlighting and recognizing the cultural links through the Hockey Art – Q150 celebrations and promoting cultural understanding through relationships with sporting and art programs and Hockey Art being promoted and displayed in partnership with Hockey Australia at the international Champions Trophy – Melbourne 2009.

- New partnerships with Australian Government – Department of Health and Aging to train young people and support the delivery of the hockey and community health messages in remote and indigenous communities.

It is all about providing opportunities – and this comes at a cost. The more successful the program – the more opportunities created and the budget increases accordingly. The Remote Hockey Program is constantly looking for partners to assist in the ongoing development of the Program. The 2010-2013 Strategic Plan shows strong direction towards the ultimate outcomes and if you can join us – success is almost always sweeter when shared.

Julie McNeil – Manager – Remote Hockey Program

Napoleon Bonaparte

Ability is of little account without opportunity.

ACTIVE PARTICIPATION

The partnership between Active After School Communities Program and the Hockey Australia National Hockey Participation Program - Hook in2 Hockey is the cornerstone of the Remote Hockey Active Participation Program. To ensure the programs are being delivered in the most effective way – the standard Hook in2 Hockey Program is modified to suit the needs of the community taking into account factors like – local facilities, numbers in the community, climate, cultural considerations and the final outcome to be achieved.

Being Active, learning new skills and understanding the game are all identified outcomes together with modifying drills, coaching tools and rules to enable the community to best enjoy participating. This approach enables the following communities to be involved successfully in 2009

CHARTING THE ACTIVE PARTICIPATION PROGRAMS BEING RUN IN PARTNERSHIP WITH THE REMOTE HOCKEY PROGRAM



It has been identified that if the hockey program can work towards a close relationship with community schools and associated programs – the hockey program has an increased chance of being successful.

External community involvement is essential and for this reason we are looking to continue our excellent relationship with government and community to advance new programs to create better relationships, teaching resources and education and training support.

To achieve the most successful outcomes and opportunities, a whole of community approach

must be applied and in 2009 the Remote Program has taken a number of Small Steps to Success in this area. We thank the following organizations for their support:-

- Queensland Government through Sport and Recreation Department
- Australian Government through the Indigenous Sport Program
- Australian Sports Commission through the Active After School Communities Program
- Gulf Sport and Recreation Association Inc
- Tagai State College
- Hockey Queensland and Hockey Australia Game Development
- Just Hockey Inc



Nelson Mandela

Education is the most powerful weapon which you can use to change the world.

COACHING AND TRAINING PROGRAMS

Much work has been done in 2009 in the development of coaching and training to ensure the effective delivery of hockey programs in remote, indigenous and Islander communities.

Delivering hockey coaching and training is just one outcome that that Remote Hockey Program identifies in this area.

Officiating, Competition, Administration and Management as well as advance skills training programs for talent identified young people complete the skill development strategies to be delivered.

In April 2009 the Remote Program partnered with Tropical North Queensland Tafe – Cairns and Thursday Island Campuses to develop an Australian first remote hockey coaching course which received recognized Tafe Queensland credits towards units in the Community Recreation Program.

The Remote Program based the accreditation on Hockey Australia's national coaching structure (Hockey Ed). However the national program is a very general one and to ensure the best training for people in remote, indigenous and Islander communities, the course was required to be modified to take into account the facilities available in the communities, the access to equipment, the needs of the coach to deliver the programs on an ongoing basis and our overall target to train these community people to act as local development officers to advance the hockey program.

The objectives of the Course were identified as:

(1) Provide ongoing Training and Coaching courses to students undertaking the Indigenous Recreation Course at the Cairns TAFE. Particular emphasis will be given to students from the Cape and Gulf Savannah Regions.

(2) The possibility of linking both the TAFE and school based programs.

(3) Actively encouraging young girls to participate and young women to be involved in the education/training and leadership activities.

(4) Develop special projects to deliver these objectives.

(5) Develop local coaching accreditation courses in Torres Strait Communities.

(6) Work with the Active After School Program where possible in partnerships.

To ensure that these objectives can be met, the training received was wider than simply teaching people to coach the hockey program.

When we broadened the content of the course – we were able to better deliver skills that will benefit the whole of the community and not just those involved in the hockey program.

Recognized credits were received from Tropical North Queensland Tafe in the following areas:-

- RXFAC001B Maintain equipment for activities
- SRXCAI003B Provide equipment for activities
- SRCCAP005A Perform warm up, stretching and cool down
- SRXCAI004B Prepare a sport and recreation sessions for participants
- SRXCAI005B Conducting sport and recreation sessions for participants
- SRXGRO001A Facilitate a group

- SRSCGP002A Include special interest groups or people with special needs
- SRSCGP004A Provide information about the fundamental principles of eating for peak performance
- SRXCAI001B Assist in conducting sport and recreation sessions for participants
- SRXCAI001B Assist in preparing sport and recreation sessions for participants
- SRSCGP001A Operate in accord with accepted coaching practices, styles and legal and ethical responsibilities
- SRSOGP002A Apply rules and regulations to conduct games and competition.

Course Data –

Registrations reflected 12 participants completing the course from 5 Torres Strait Island communities. Indigenous Community Members were all women.



In 2009 the effective delivery of the Active After School Communities Program has been achieved through these community based coaches and in due course these coaches will be our local development officers trained through this process and made possible through the remote Hockey Development Officer Program.

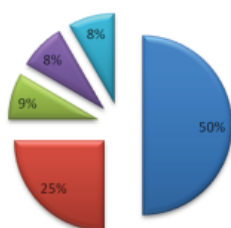


Community Coaches undertaking first Tafe and Hockey Queensland joint education and training course

Through Community consultation and discussions with coaches conducting the programs in the remote, indigenous and Islander communities, we have identified that future program development may see the modification of this education and training program further to compliment the Active After School Communities Program. This will limit the duplication and provide an ascending step structure in the accreditation and training of members of the remote, indigenous and Islander communities.

Island Communities Involved in Tafe Partnership

■ Badu ■ Thursday Island ■ Murray ■ Darnley ■ Mobiaug



Boris Becker

*I love the winning
I can take the losing
But most of all - I just love to play*

COMPETITIONS

Developing, advancing and supporting access to local competition is seen as integral to the success of the Remote Hockey Program. In small communities, regular competition is difficult to sustain and the young people as a result do not have the opportunity to experience the social benefits of being part of a team and learning the life skills that this provides.

The Remote Program has worked with communities to develop hockey competitions to support and promote the hockey programs. These competitions assist in:-

(a) Highlighting the skills developed by young people through local Hook in2 Hockey competitions.

(b) Providing opportunities for coaches and other officials to develop their skills obtained through education and training programs specially developed to community needs.

(c) Identifying talented young people and assisting in selection into the Pathway to Success Development Camp programs and State Competitions.

(d) Supporting community leadership programs and cultural recognition programs through hockey art competition.

KARUMBA FESTIVAL OF HOCKEY

This Festival combines competition, fun and friendship across the communities of the Gulf Savannah. It is the culmination of the Active After School Communities Hockey Program and each year the hockey competition grows in numbers and hockey standard. Competitions are offered in 2 separate divisions –

(a) Grade 3,4 and 5

(b) Grade 6 and 7

In 2009 a record number of entries saw over 150 students from all over the Gulf Savannah compete. Three fields were marked across the Karumba Golf Club and young people showed off their skills, had fun and experienced all the emotions from being part of a team.

Clinics were held as part of the festival assisting in the development of leadership skills, education and training of coaches and officials.

We invited one of the young people who umpired the final of the Under 13 State Championships – Matthew Cook aged 15 from the Sunshine Coast to travel to Karumba to meet and participate. Matthew created a diary and set out his thoughts, observations and opinions.

This diary was posted on the www.remotehockey.com We also invited the Captain of the Cairns Under 18 girls hockey team which competed in the 2009 State Championships. Christine Lucas Ben is a young indigenous woman with strong leadership qualities.

These 2 young people mixed and mingled with the participants and supporters and discussed

(a) Sport and healthy eating.

(b) Opportunities available in hockey through pathways programs.

(c) Team Work and the Life lessons from being part of a team.

(d) How sport brings people together.

The feedback was very positive and the initiative was supported through-out the festival with requests to continue this type of mentoring and interaction.

The program also conducted mentoring and training workshops for community coaches and umpires included in the women's leadership program. We are developing a solid foundation of cross community support with

women making themselves available to coach and manage Gulf Squads in the Pathway to Success program.

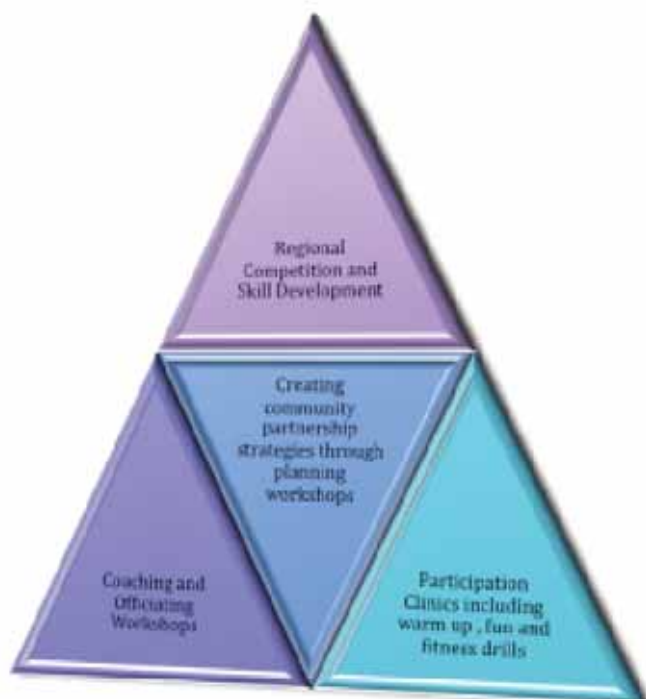


Highlight of the youth mentoring program

GULF -V- CAPE/TORRES HOCKEY CHALLENGE

This Program is the culmination of Pathway to Opportunity Program that brings the strategies of Active Participation, Skill Development and Competitions together.

The objectives of the Challenge are set out as follows:-

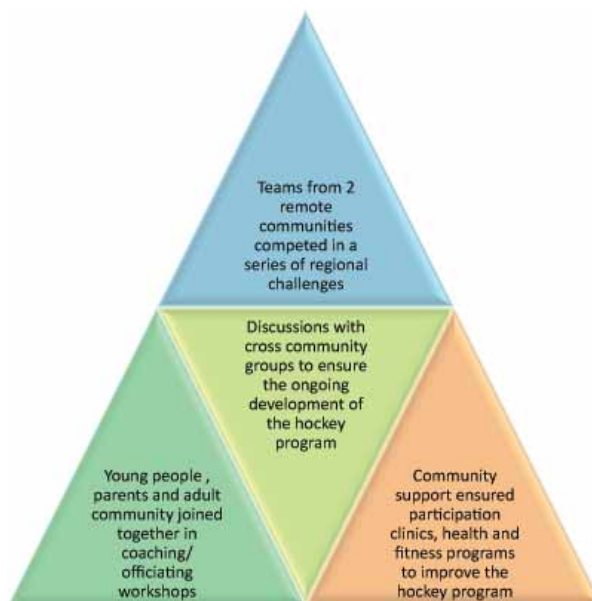


This Program required significant logistical management and administration. It was identified that local coordinators from both regions must be appointed and be active. This was achieved and what could have been a difficult and frustrating task was in fact complex but not complicated.

The responses from all parties involved proved positive. The competition highlighted the hockey programs in each region, facilitated a series of Challenges against Talent Squads from each region and significant time was allowed for workshops for both young people and adult supporters.

Highlights of the Challenge

For the purposes of this report – Outcomes have been identified as follows:-



Such was the impact of this Program – support from all aspects of the community was received with commitments for 2010 and beyond. This Challenge was made possible through a Special Initiative Program of the Queensland Government to facilitate regional competition within the Gulf Savannah Communities.

More details in this initiative can be found at www.remotehockey.com



Goalkeeping skills advanced as a result of the Challenge



Access to advanced competition and team skills

Johnny Carson

Talent alone won't make you a success. Neither will being in the right place at the right time, unless you are ready. The most important question is: "Are you ready?"

TALENT IDENTIFICATION AND DEVELOPMENT

The strategies to provide opportunities for the advancement the skills of the talent identified athlete are of equal importance. Providing coaches and trainers in the local community is essential but if provision is not made for the pathways to provide advanced skills and coaching for these talented athletes – there is no incentive to improve.

In 2009, the Torres Strait and Gulf communities supported the squad of identified athletes and coaches to travel to Cairns to participate in a Development Camp designed to develop advanced skills in the sport as well as providing coaching and support to enable these advance skills to be coached in the local community.

The athletes had opportunity to train on the international class facilities and be coached by elite coaches. Cairns Hockey provided assistance and support and Just Hockey provided quality equipment to facilitate the easier teaching of these advanced skills.

Additional workshops were undertaken by the students in eating and nutrition for peak performance and understanding sports injuries and sports medicine. We thank the Qld Department of Communities and Department of Health for the support to these workshops.

Cairns Hockey held a specialist goalkeeping clinic and invited the goal keeper in the squad to participate obtaining additional and advanced understanding of the specialized position.

To highlight the advanced skills and set plays this squad was taught, a competition was arranged through Cairns Hockey with the members of the Port Douglas and Mossman communities hockey development program. Access to observing higher quality competition was provided through watching the Cairns –v- Townsville competition.

Youth Leaders were identified, life skills were advanced and team skills were advanced to better provide for advancement to Regional and State Representation. More information can be found at www.remotehockey.com

A Thursday Island young girl was selected in the Cairns Under 13 team to attend the State Championships.



Talent identified players at Development Camp – Cairns

Rollo May

Communication leads to community, that is, to understanding, intimacy and mutual valuing

COMMUNITY ENGAGEMENT PROGRAMS

In 2009 the Remote Community has engaged the community is a number of Projects to ensure the respect, delivery, promotion and sustainability of hockey in the respective communities. The projects range from partnerships to facilitate ongoing education and training and working as hockey development officers in local communities to highlighting the very real combination which sport and culture plays through the Hockey Art Program.

Both these programs require widespread community engagement and offers opportunities to promote the strengthening links between sport/hockey and community.



Lee J. Colan

Mentor and coach others whenever you can. Your teaching will deepen your own learning.

Hockey Development Officers in Remote Indigenous and Islander Communities

Queensland 150 Celebrations – Combining Sport and Culture through Hockey Art in the Torres Strait – An Interactive Approach of reflecting on our Past and Imagining our Future

The Project Aims to raise awareness to the Q150 celebrations by recording culturally and historically significant events in a unique way through Hockey Art – painting of the stories on hockey sticks, publishing the accompanying stories and distributing through the Island communities and the hockey community in Queensland.

The objectives of the Project are:-

- (a) Strengthen partnerships through better understanding of the Torres Strait Island culture and community.
- (b) Promoting the Q150 celebrations with a permanent record of the artwork and stories.
- (c) Understanding the uniqueness of the culture and respecting their values when developing future program.
- (d) Communicating the hockey program in the Torres Strait to the Hockey community in general.



Hockey Art – celebrating Q150 in Torres Strait

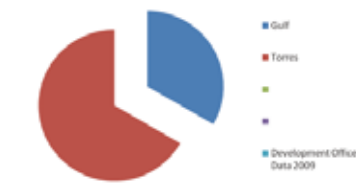
With the support of the Queensland Government – the Remote and Indigenous Hockey Program was able to create, develop and advance a Development Officer Course that meets the needs of these communities. The local hockey development officers can now deliver hockey programs and competitions that suit the needs of the local communities.

This Project faced many difficulties – one of which was the different delivery requirements in many of the identified communities and the fact that a general accredited Tafe course could not solve the many associated difficulties. Nevertheless, with the solid community support and the partnerships between Tafe and the local community schools, a strategy and program was finally developed and adopted to meet the outcomes that the local communities and the hockey program need.

In 2009 we modified training and education programs and partnered with Tafe to ensure that those people in the community could act as effective development officers. We partnered with the Active After School Communities Program to assist with delivery options and at the conclusion of 2009 we have 6 development officers appointed in the Torres Strait Island communities and 5 officers in the Gulf Savannah.

The Remote Hockey Program has plans to support this program with teaching resources that can benefit the whole community and this program is in its initial planning stages and will be outlined further in this report. The Remote Hockey Program has also plans to further advance the partnership with Hockey Australia to design a course that will ultimately see hockey in the National training Package using this existing program as a base. Plans are being developed to expand this program in 2010 through vocation education where the community and the hockey program look to identify young people in grade 11 and 12 to undertake training courses with the view of providing additional opportunities to both the young person and the community.

Positions of Development Officer within the Program



As part of the new support funding through the Australian Government – Department of Health and Aging Indigenous Sport and Recreation Program – the Remote Program has had the opportunity to include within its program the position of an indigenous trainee.

The young woman who is now in this role is a young indigenous woman from Cairns with existing experience in the sport of hockey. Christine Luca Ben was the captain of the 2009 Under 18 Cairns team that competed in this year's state championships.

The role will be assisting in the delivery of the hockey programs in the Gulf and Torres Strait communities as well as establishing a pilot program in the Cairns region to increase indigenous participation in hockey and establish close links with community and school organizations.

It is an exciting time for the Program with Christine to be enrolled in studies at our partner organization Tropical North Queensland Tafe.



Christine Lucas Ben – new trainee with young girls involved in the Hockey Program from Mornington Island

By combining sport with culture, Hockey Art seeks to create opportunities in life based on the joy found in effort, the educational value of good example and respect for each other's differences.

Julie McNeil
Program Manager

HOCKEY ART GOES INTERNATIONAL

The Remote Hockey Program has had from its inception a respect for the differences of each other and the need to engage and learn about people's differences in an effort to reach better understanding. The Remote Program delivers hockey programs to people in a number of cultural backgrounds. Indigenous and Islander communities feature prominently.

The concept was developed with the view of giving young people the opportunity of expressing their views through images painted on hockey balls and hockey sticks. This developed into partnerships with Tropical North Queensland Tafe with indigenous artists joining in and presenting a professional presentation of sticks and balls reflecting stories and journeys of where they come from and where they are heading.

In 2009 young people from the communities of the Gulf Savannah presented their own images reflecting the uniqueness of the Far North West Queensland country with sticks portraying the white cockatoos of Georgetown, crocodile country of Karumba and the colours of Lake Croydon.

Taking this program to the next step – we have entered into a partnership with Hockey Australia, Just Hockey, Des Abbott from the Australian Men's Hockey Team – the Kookaburra's to highlight indigenous hockey programs and the indigenous culture at the Champions Trophy Hockey Tournament in Melbourne Nov/Dec 2009.

Indigenous and Islander artists will provide artwork for display and sale and Photographic Images of the Hockey Queensland Remote Program will highlight the unique environment and the modifications necessary to successfully develop and advance hockey programs to take into account language, cultural and vastly different social conditions.

Des Abbott has agreed to use hockey sticks painted with indigenous images and designs in warm ups and be involved in highlighting the opportunities for young indigenous and islander people in the sport of hockey.

We look forward to a successful partnership and photos and reports will be highlighted on

www.remotehockey.com

Images of Hockey Art



Georgetown in the Gulf Savannah is known for the beautiful white cockatoos



Hockey art clinics at the Champions Trophy - July



Artwork from the remote indigenous community of Mornington Island



Presentation of Artwork – Indigenous Sports Award

BE ACTIVE – SCORE GOALS – PLAY HOCKEY

Impact of funding from Commonwealth Department of Health and Aging – Indigenous Sport and Recreation Program on the Hockey Queensland Remote Hockey Program

In 2009, funding was received through the above department advance the indigenous programs in the Cairns region and Gulf Savannah communities. This is a whole of community project with partners from Vacation Care, Active After School Communities Program, Tropical North Queensland Tafe, community councils and community schools and Cairns Hockey Association Inc

Integral to this funding is the appointment of an indigenous young person to become a trainee development officer and role model to community.

We look forward to a successful association.



Walt Disney

Of all of our inventions for mass communication, pictures still speak the most universally understood language

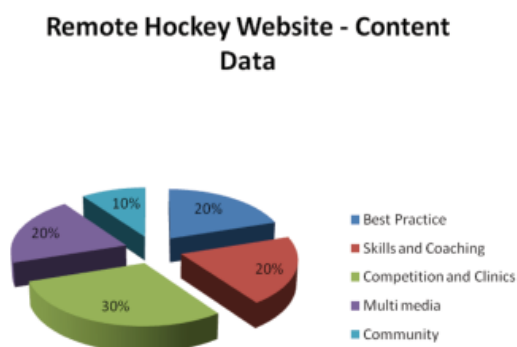
WEB SITE DEVELOPMENT

Being able to access relevant information is one of the identified difficulties that people in remote communities face. Establishing a site designated for the purpose of advancing hockey in remote indigenous and Islander communities is one small way we can facilitate effective communication and make delivery of programs just that little bit easier.

The Hockey Queensland Remote, Indigenous and Islander web address is www.remotehockey.com and since it first came on line, the feedback we have received has been positive.

The web site has been designed so it will be able to be further advanced to assist in the provision of resources in areas of:-

- (a) Mentoring
- (b) Training and Education Programs
- (c) Promoting current hockey events within the program.
- (d) Information dissemination



The Remote Hockey Program has also an international presence within the International Platform of Sports Development and links can be found on the web site.

Thomas Carlyle

Man is a tool-using Animal. Nowhere do you find him without tools; without tools he is nothing, with tools he is all.

EQUIPMENT AND FACILITIES

Hockey is a sport that requires specific equipment. For the sport to develop, access to this equipment and adequate facilities on which to conduct the game is essential. From the outset of the Program, Just Hockey Inc has been a significant supporter of the Program and has provided substantial equipment and resources at greatly reduced cost. This year, Just Hockey has provided sticks, ball, hockey bags, shirts and goal keeping gear and shirts to the communities of the Remote Program.

Hockey Australia, through Hook in2 Hockey has provided in excess of 200 participation kits to ensure the ongoing development. Freight costs can be excessive when travelling into remote communities and we would like to thank

local communities for assisting with these costs. The Australian Sports Commission manages a grant from the International Laureus Sport for Good Foundation for equipment in remote and indigenous communities. The Program received support from this source in 2009 which was applied for the benefit of participation programs through-out the Gulf Savannah and Torres Strait.

This year – with devastating flooding in some of these communities much of the equipment, in particular goal nets and equipment sheds, were destroyed – literally floated away. We have developed a plan to replace these expensive items with the assistance of community help and funding support. In many of the communities in which we deliver, the recreation space must be shared. In some communities there is little land to spare. Hockey is played on basketball courts, indoor sports facilities, football fields, school ovals, community ovals and finally in Karumba – the hockey fields are the 1st and 10th hole of the Karumba Recreation and Golf Course.

Programs were modified to fit the facilities and the environment. Hockey is still played and developed but in many cases it is far from the International quality of the artificial turfs found in many provincial cities and all capital cities throughout Australia. Nevertheless, with the support of good local coaches, a mentoring network and a delivery system for equipment, the programs fit together in all shapes and sizes.



Horn Island Hockey Team and equipment supplied by Just Hockey Inc and Laureus Sport for Good Foundation

Proverbs

A good plan today is better than a perfect plan tomorrow



PLANNING AND FUTURE DEVELOPMENT

The Remote Hockey Program has always understood the importance that solid strategic planning and development has to the success or otherwise of this program. Delivering into regions that cover individually an area larger than the states of Victoria and Tasmania combined with limited budgets and resources means that a little must travel a long way. The most effective way to identify and prioritize plans and programs and place appropriate resources accordingly is to undertake comprehensive planning and reviews.

The Planning and Strategic Development within the Remote Hockey Program relies on long term strategic direction supported by shorter term operation/action plans. This provides the necessary direction to all partners to ensure we are all travelling in the same direction towards the same outcomes. Widespread community consultation ensures that existing programs are reviewed on a regular basis and the Program has the structure to enable amendments to these plans if it best suits the needs of the communities and still maintains the successful outcome.

Currently the following Plans and Strategies form the basis of our Program and Plans

- 2010-2013 Strategic Plan
- Hockey Queensland Indigenous Participation Strategy
- 2009-2010 Remote Hockey Development Plan

These Plans are outlined in greater details at <http://www.remotehockey.com/about-us/plans-strategy>

Program's Vision

Taking the lead in Sports Development across Queensland's Remote, Indigenous and Islander communities.

Program's Mission

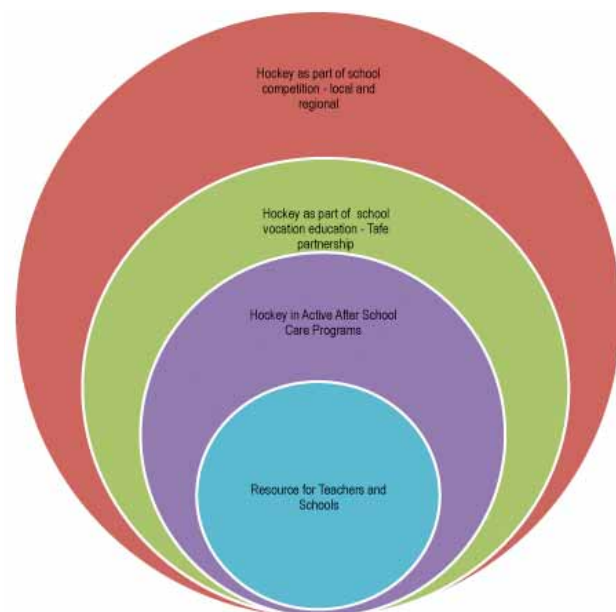
To provide excellent and assessable sporting and social experiences for all

Program's Core Values

- Earning Respect
- Understanding Cultures
- Effective Communication
- Modifying Plans to suit Community needs

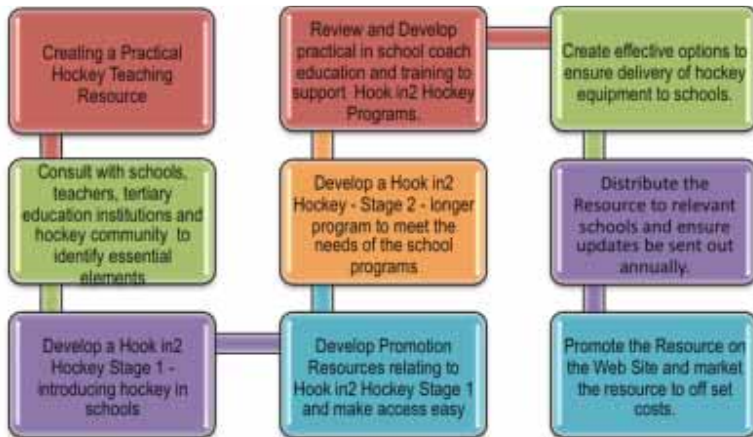
The Planning Process allows us to identify the programs future needs and discuss with relevant partners, organizations and government agencies at all levels to best provide and secure the Program's ongoing development. Substantial work has been undertaken to chart the structure and process of introducing a non-traditional sport into remote, indigenous and islander communities. From this it is anticipated that the program can find support and resources to facilitate sustainability.

ENCOURAGING REMOTE COMMUNITY SCHOOLS TO INCLUDE HOCKEY AS PART OF THEIR PERMANENT SPORTS PROGRAM



Encouraging Remote Community Schools to include hockey as part of their permanent sports program

DEVELOPING PRACTICAL TEACHING RESOURCES



Development Level State 1 – Within the Remote Program

Development Level – Stage 2 – Queensland wide application



Voltaire

By appreciation, we make excellence in others our own property.

ACKNOWLEDGEMENTS

Creating Best Practice to ensure projects develop and advance requires Community, Collaboration and Connectivity. Broadening the definitions of these terms and how they relate to the projects and programs is the challenge.

You are community - I am community together we can go further than an individual. Collaborating with others to obtain the best available outcomes is a sign of strength and not one of weakness. Connectivity should not be a term limited to the new technologies – connecting and staying connected to our colleagues by the best available resources is essential to long-term outcomes of sustainability. We are working towards better application of these principles to the advantage of the Program but we could not have come this far without ongoing support and assistance.

Many thanks to the support and funding we receive from the Queensland Government. Sport and Recreation Services in Cairns assists and supports us in our delivery challenges. The Australian Government through the Australian Sports Commission delivers our program funding opportunities, resources and support which facilitates the Program's advancement. Their confidence in our ability to achieve outcomes and explore development opportunities is sincerely appreciated. We have a new partner – Commonwealth Government Department of Health and Aging and we hope this is the start of a long and productive association.

The members of the Gulf Savannah community through Gulf Sport and Recreation Inc work tirelessly to assist in the delivery of programs. We must not forget these communities suffered through devastating flooding earlier this year. We saw and felt the resilience and strength of spirit that people who live in remote communities call upon and it was great motivation to the program. We thank all involved and wish them only the best of times as we move forward.

The members of the Torres Strait communities we deliver to are some of the most isolated not just in Queensland but in Australia. The lessons we learn and the life experiences we receive from being involved directly with the day to day challenges in providing opportunities that many take for granted, nurtures our understanding and respect of people in remote Indigenous and Islander communities. These people

make us stronger in our commitment to delivering opportunities.

Just Hockey Inc is the programs longest and strongest commercial supporter. Access to equipment and facilities is challenging and Just Hockey has always been committed to this program as a matter of priority. The collaboration is a key element of our success and we thank them for their confidence in us and their ability to see the benefits of what we do.

The supportive policies of hockey associations throughout the State of Queensland to this program shows that we can all connect together for the benefit of the sport as a whole. Connectivity either by way of web based technologies or personal involvement means that members of the hockey community in the south-east corner of the State have the ability and opportunity to participate in programs which increase the overall understanding and respect of different cultures, remote, indigenous and islander conditions and the capacity for everyone regardless of geography to participate and compete.

The support of Hockey Australia for our new initiatives and strengthening links with national education and participation programs is an example of how all levels of hockey can work together for the community benefit and the advancement of the sport as a whole. Communication is an essential element in the building of these relationships. We thank everyone who works with us for the betterment of people playing hockey.

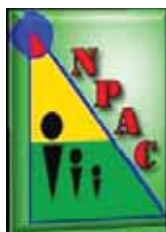
We thank the Board members of Hockey Queensland Inc in their active support of the Program's vision. Knowing this support is available is invaluable in our efforts to move forward.


To David McNeil for the work he has done in producing modified coaching accreditation courses recognized by Tafe, Schools and colleagues in the industry has enabled the program to move from strength to strength and earn broad cross sectional credibility. To Barry Vohland and Cathy Taylor thank you for your support.

The Hockey Queensland General Manager continues to be the greatest supporter of this Program. His commitment to delivering programs that have whole of community benefit is without question. He understands that the strength of the Program is people and their infinite capacity to adapt, learn and advance. He gives this program the latitude and where available, the resources to encourage everyone within the Program to take the next step.

Significantly – he has faith that our next step is the appropriate one.

With thanks to:





Hockey Queensland Inc
State Hockey Centre
400 - 420 Lytton Road
Colmslie Qld 4170

P (07) 3399 6577
F (07) 3399 6969

www.hockeyqld.com.au
www.remotehockey.com

Authored by Julie McNeil - Program Manager